

EUREKA APARTMENTS



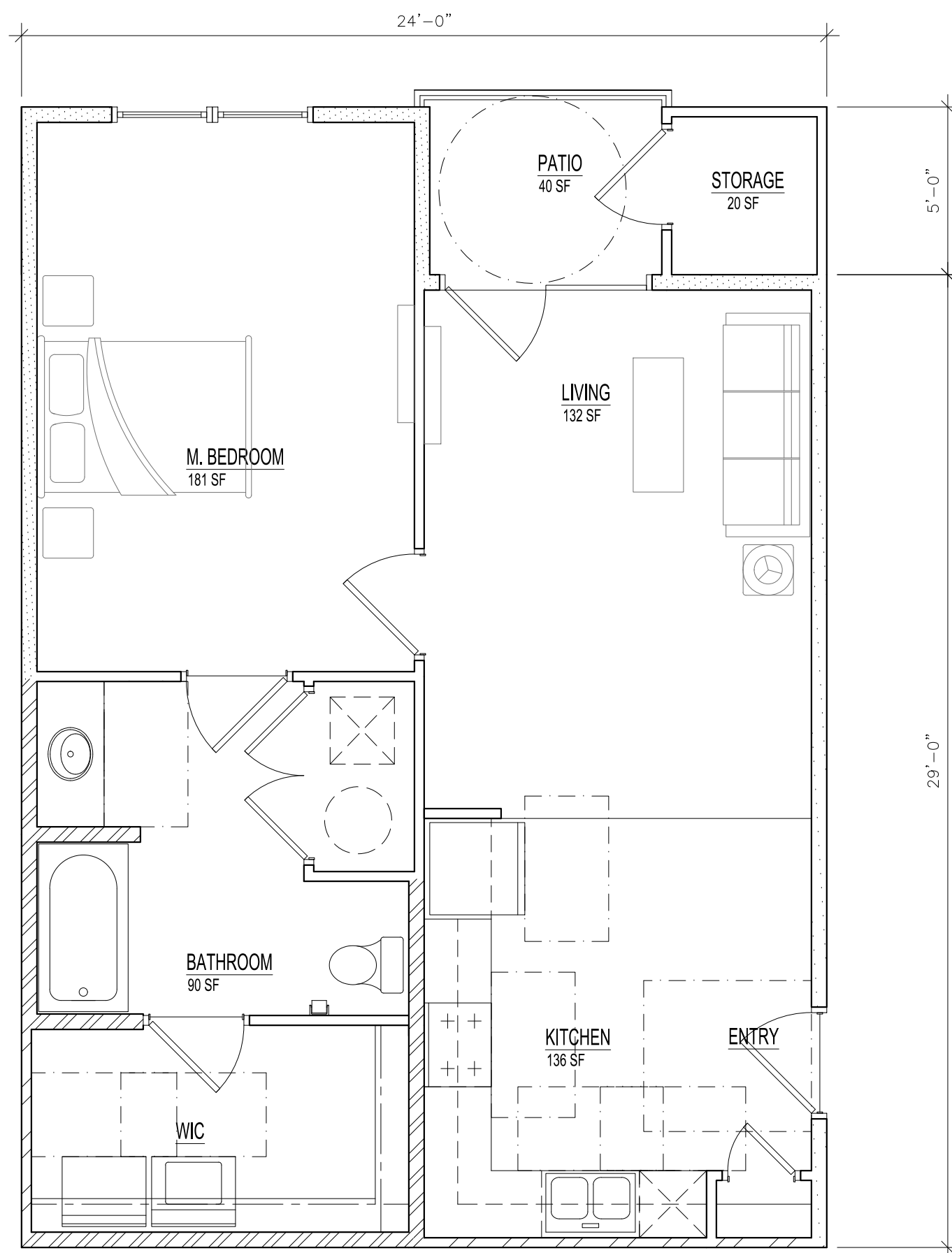
DRAWING INDEX

CS1	COVER SHEET
A1.1	A-2 UNIT PLANS
A1.2	B-1 UNIT PLANS
A1.3	C-1 UNIT PLANS
A1.4	D-1 UNIT PLANS
A1.5	BUILDING TYPE I - BUILDING PLAN
A1.6	BUILDING TYPE I - BUILDING PLAN
A1.7	BUILDING TYPE I - EXTERIOR ELEVATIONS
A1.8	BUILDING TYPE II - BUILDING PLAN
A1.9	BUILDING TYPE II - BUILDING PLAN
A1.10	BUILDING TYPE II - EXTERIOR ELEVATIONS & SECTION
A1.11	BUILDING TYPE II - EXTERIOR ELEVATIONS
A1.12	BUILDING TYPE III - BUILDING PLAN
A1.13	BUILDING TYPE III - BUILDING PLAN
A1.14	BUILDING TYPE III - EXTERIOR ELEVATIONS
A1.15	BUILDING TYPE III - EXTERIOR ELEVATIONS
A1.16	CLUBHOUSE PLAN
A1.17	CLUBHOUSE ELEVATIONS

EUREKA APARTMENTS

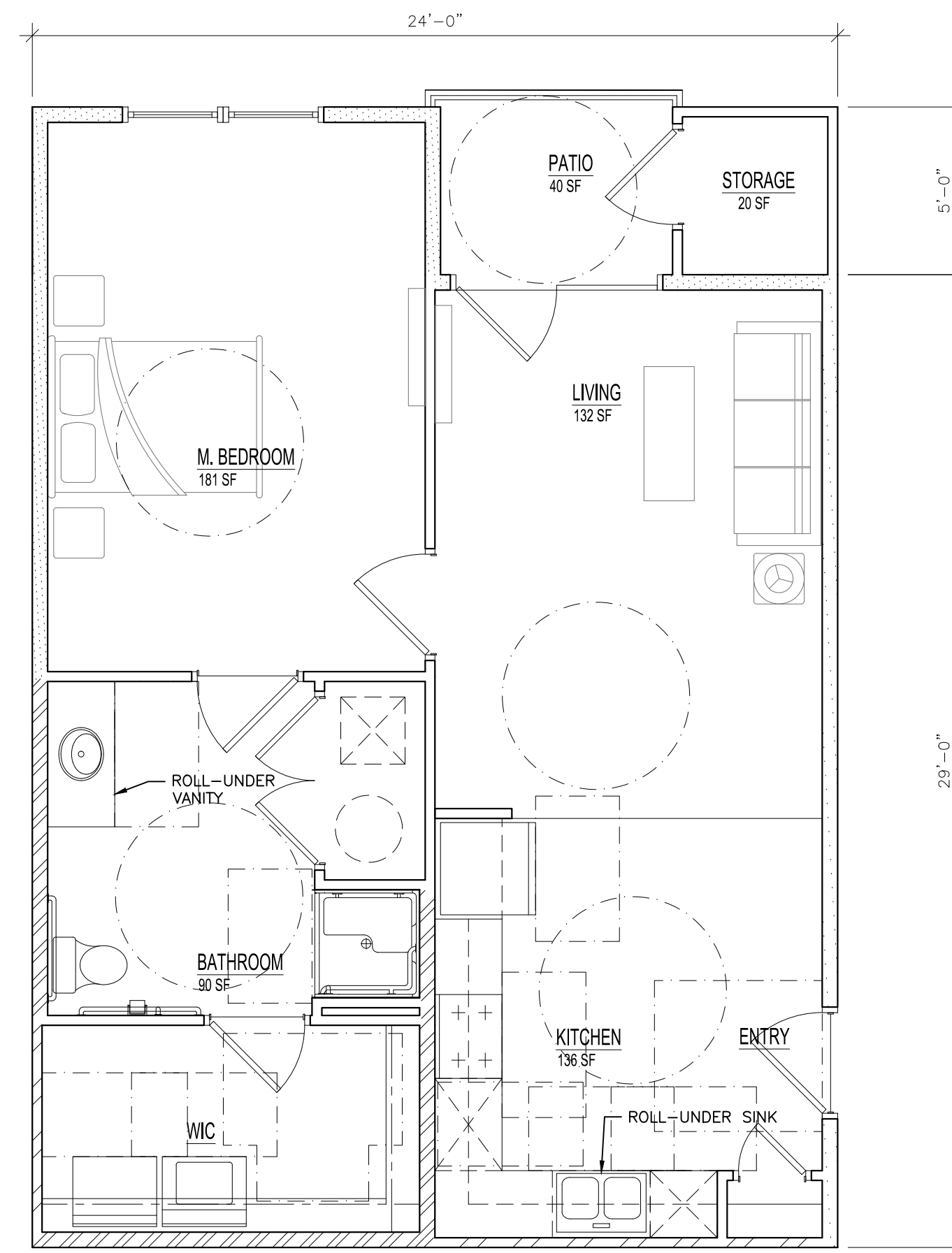
Apartment Building

CS1
COVERSHEET



02 FLOOR PLAN: A-2 Type B Unit

GROSS AREA: 819 NET AREA:759 SF
(1/8" = 1'-0" when 11x17)



01 FLOOR PLAN: A-2 Type A Unit

GROSS AREA: 819 NET AREA:759 SF
(1/8" = 1'-0" when 11x17)

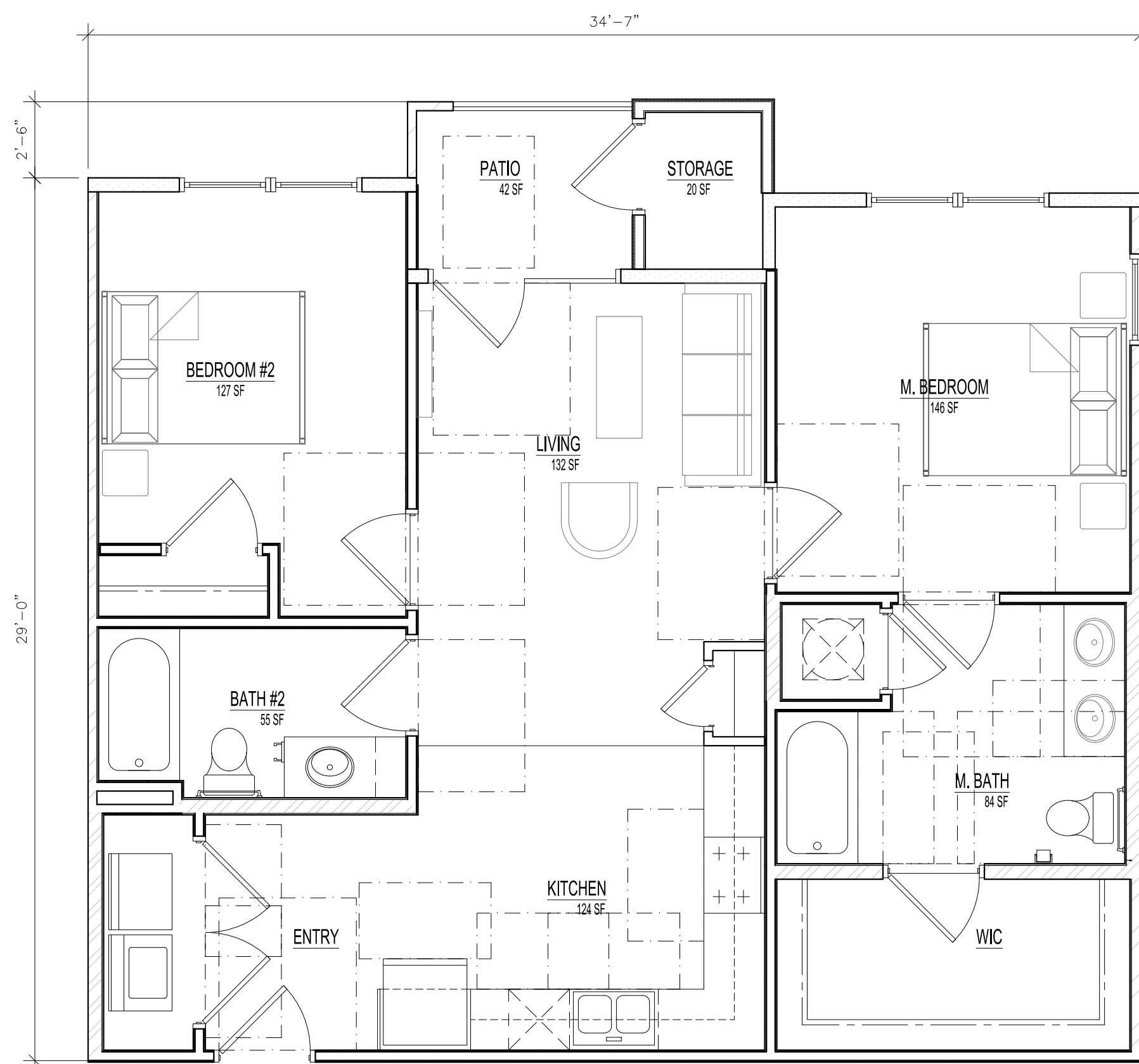
EUREKA APTS.

UNIT PLANS
Schematic

- ☐ Approved
- ☐ Revise as noted

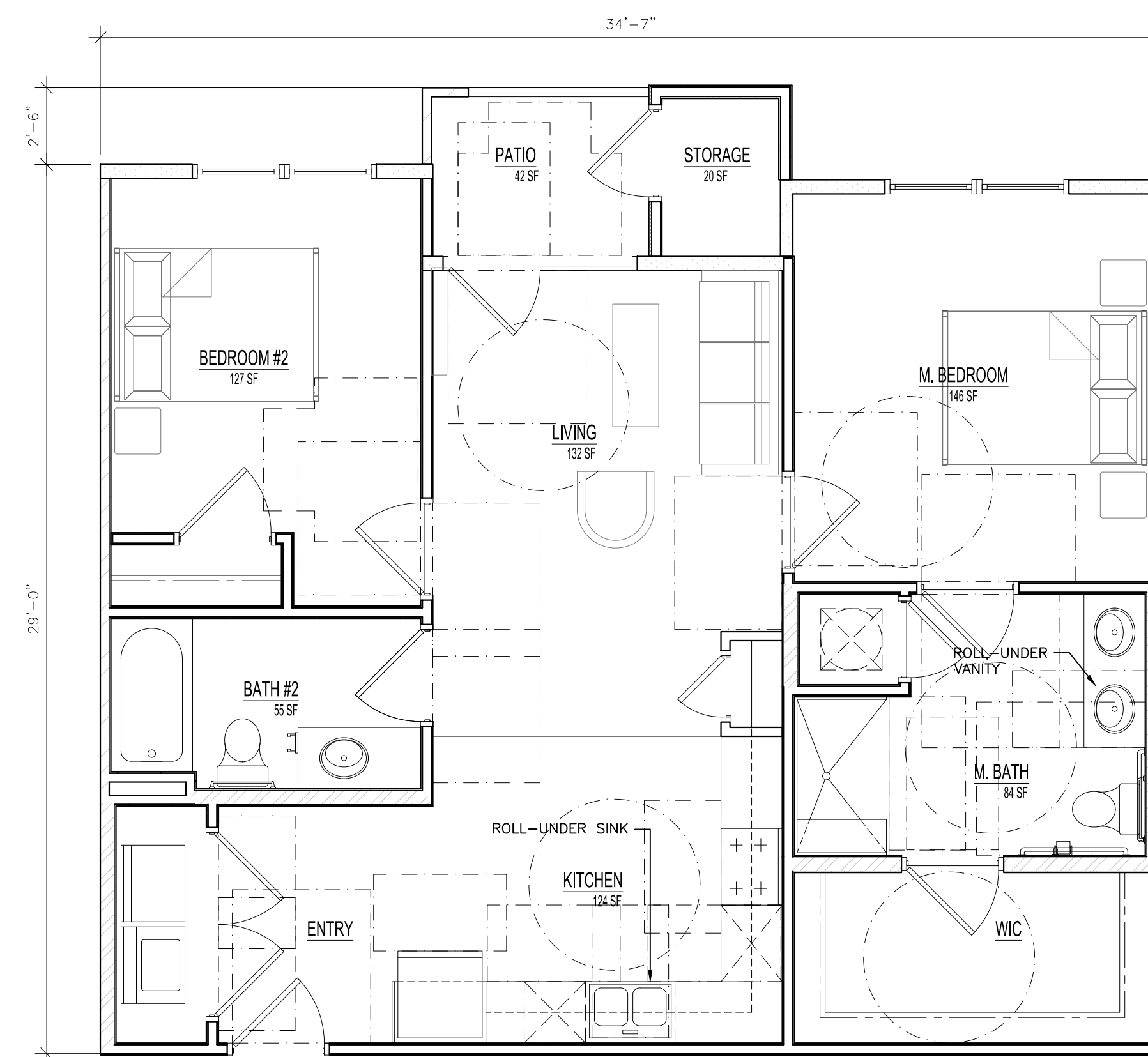


A1.1
A-2 UNIT PLANS



02 FLOOR PLAN: B-1 Type B Unit
1/4" = 1'-0"

GROSS AREA: 1,026 NET AREA: 964 SF
(1/8" = 1'-0" when 11x17)



01 FLOOR PLAN: B-1 Type A Unit
1/4" = 1'-0"

GROSS AREA: 1,026 NET AREA: 964 SF
(1/8" = 1'-0" when 11x17)

EUREKA APTS.

UNIT PLANS
Schematic

- ☐ Approved
- ☐ Revise as noted



A1.2
B-1 UNIT PLANS



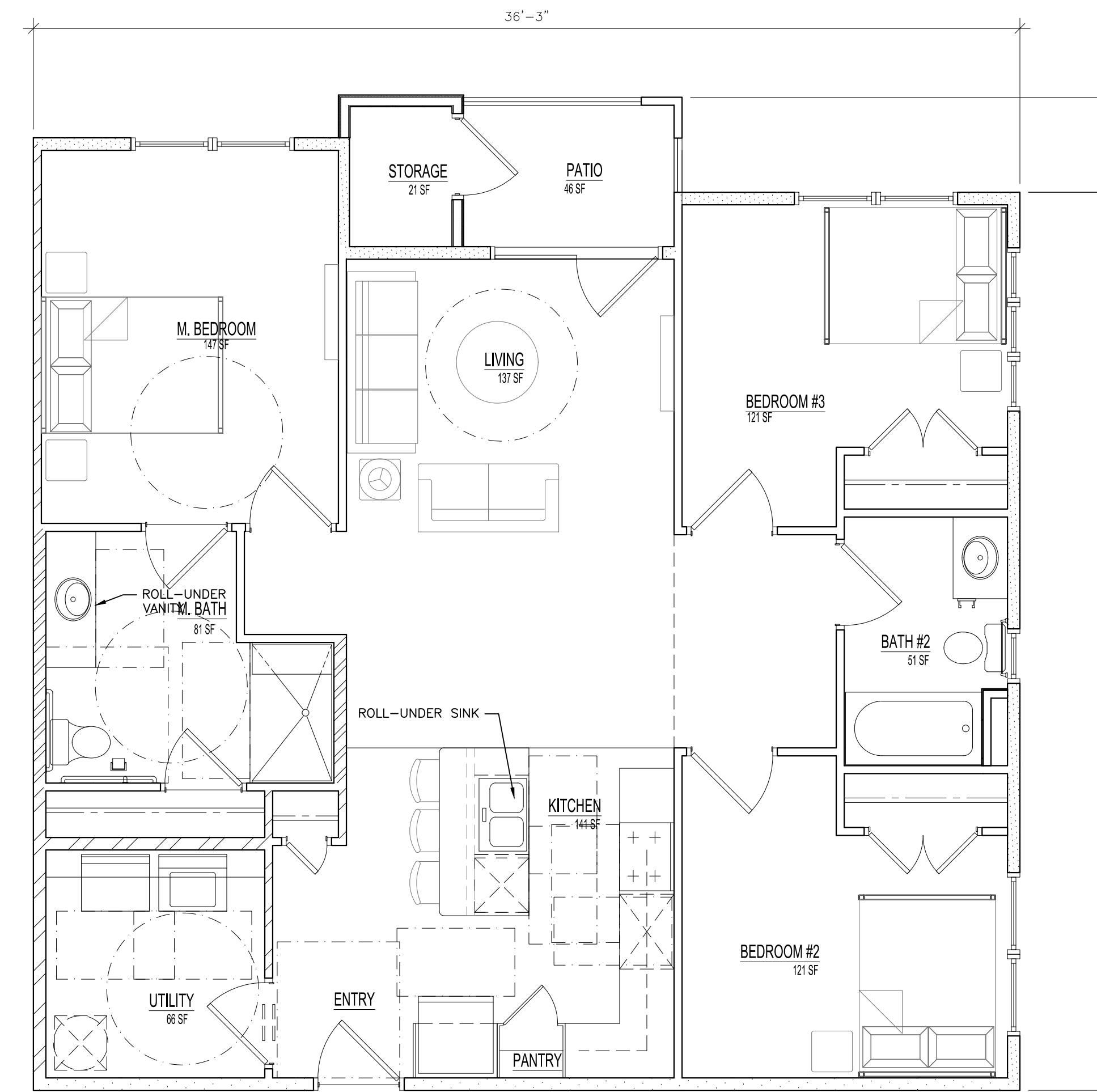
02

FLOOR PLAN: C-1 Type B Unit

1/4" = 1'-0"

GROSS AREA: 1,263 NET AREA: 1,197 SF

(1/8" = 1'-0" when 11x17)



01

FLOOR PLAN: C-1 Type A Unit

1/4" = 1'-0"

GROSS AREA: 1,263 NET AREA: 1,197 SF

(1/8" = 1'-0" when 11x17)

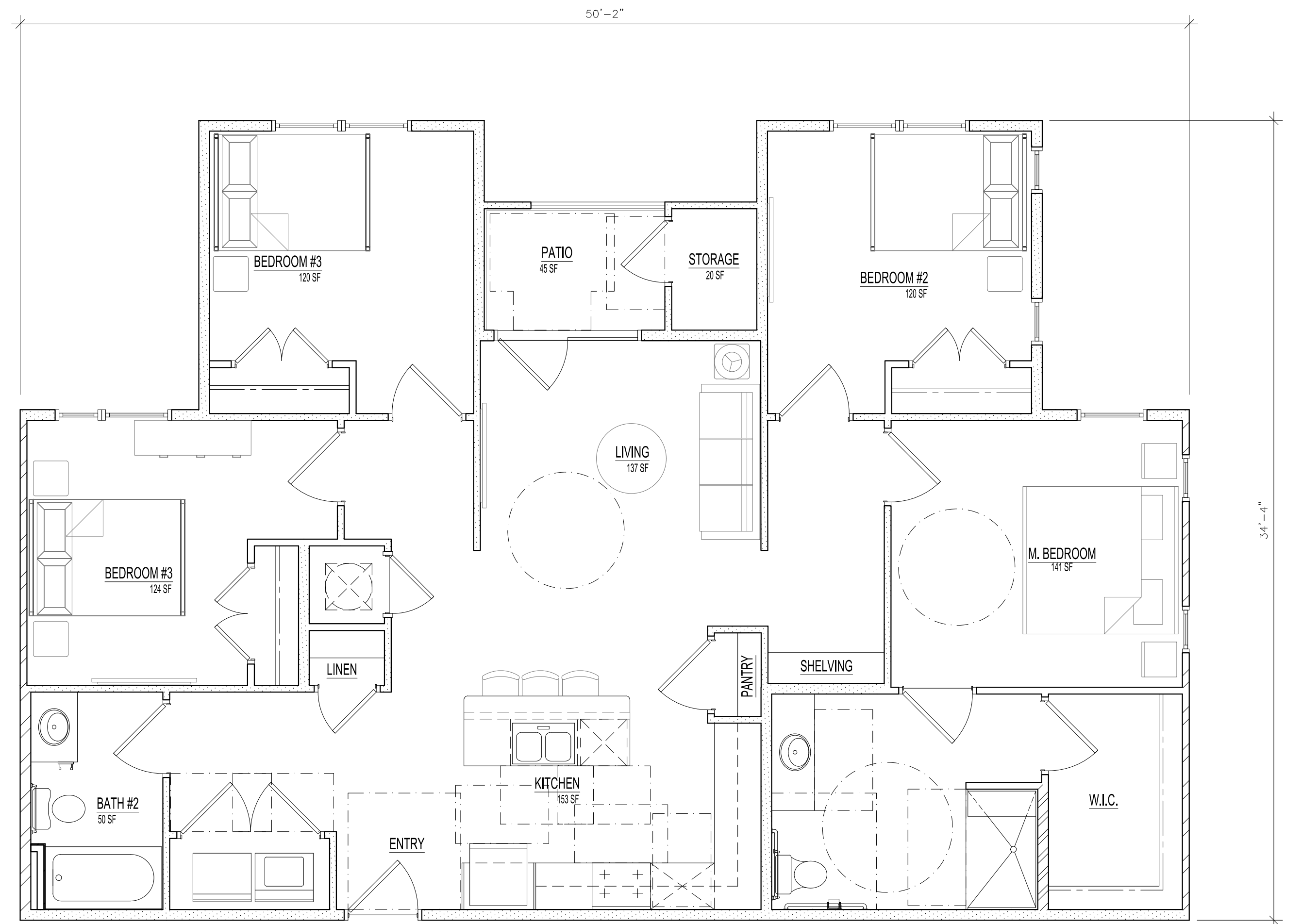
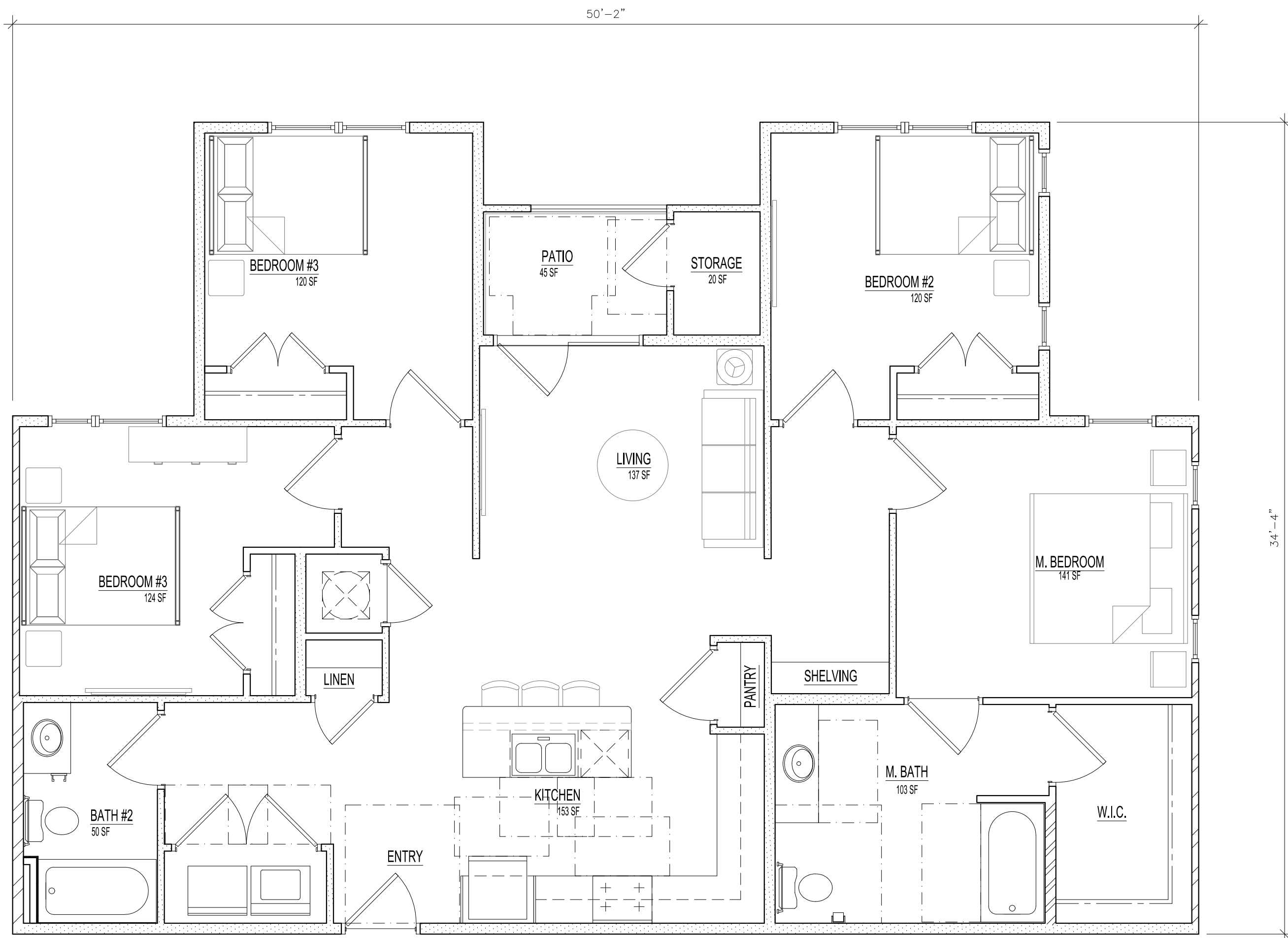
EUREKA APTS.

UNIT PLANS
Schematic

- ☐ Approved
- ☐ Revise as noted



A1.3
C-1 UNIT PLANS



02

FLOOR PLAN: D-1 Type B Unit

1/4" = 1'-0"

GROSS AREA: 1,429 NET AREA: 1,362 SF

(1/8" = 1'-0" when 11x17)

01

FLOOR PLAN: D-1 Type A Unit

1/4" = 1'-0"

GROSS AREA: 1,429 NET AREA: 1,362 SF

(1/8" = 1'-0" when 11x17)

EUREKA APTS.

UNIT PLANS
Schematic

- ☐ Approved
- ☐ Revise as noted



A1.4

D-1 UNIT PLANS



01 FLOOR PLAN: Building Type I First Floor Plan
 1/8" = 1'-0"

Gross Building SF: 11,850 Net SF: 9,286
 (1/8" = 1'-0" when 11x17)

EUREKA APTS.

BUILDING PLANS
 Schematic

- ☐ Approved
- ☐ Revise as noted



A1.5
 BUILDING TYPE I PLAN



01 FLOOR PLAN: Building Type I Second/Third Floor Plan
 1/8" = 1'-0"

Gross Building SF: 11,726 Net SF: 9,286
 (1/8" = 1'-0" when 11x17)

EUREKA APTS.

BUILDING PLANS
 Schematic

- ☐ Approved
- ☐ Revise as noted



A1.6
 BUILDING TYPE I PLAN



02 ELEVATIONS: Building Type I - Right/Left

1/8" = 1'-0"

(1/8" = 1'-0" when 11x17)



01 ELEVATIONS: Building Type I - Front/Rear

1/8" = 1'-0"

(1/8" = 1'-0" when 11x17)

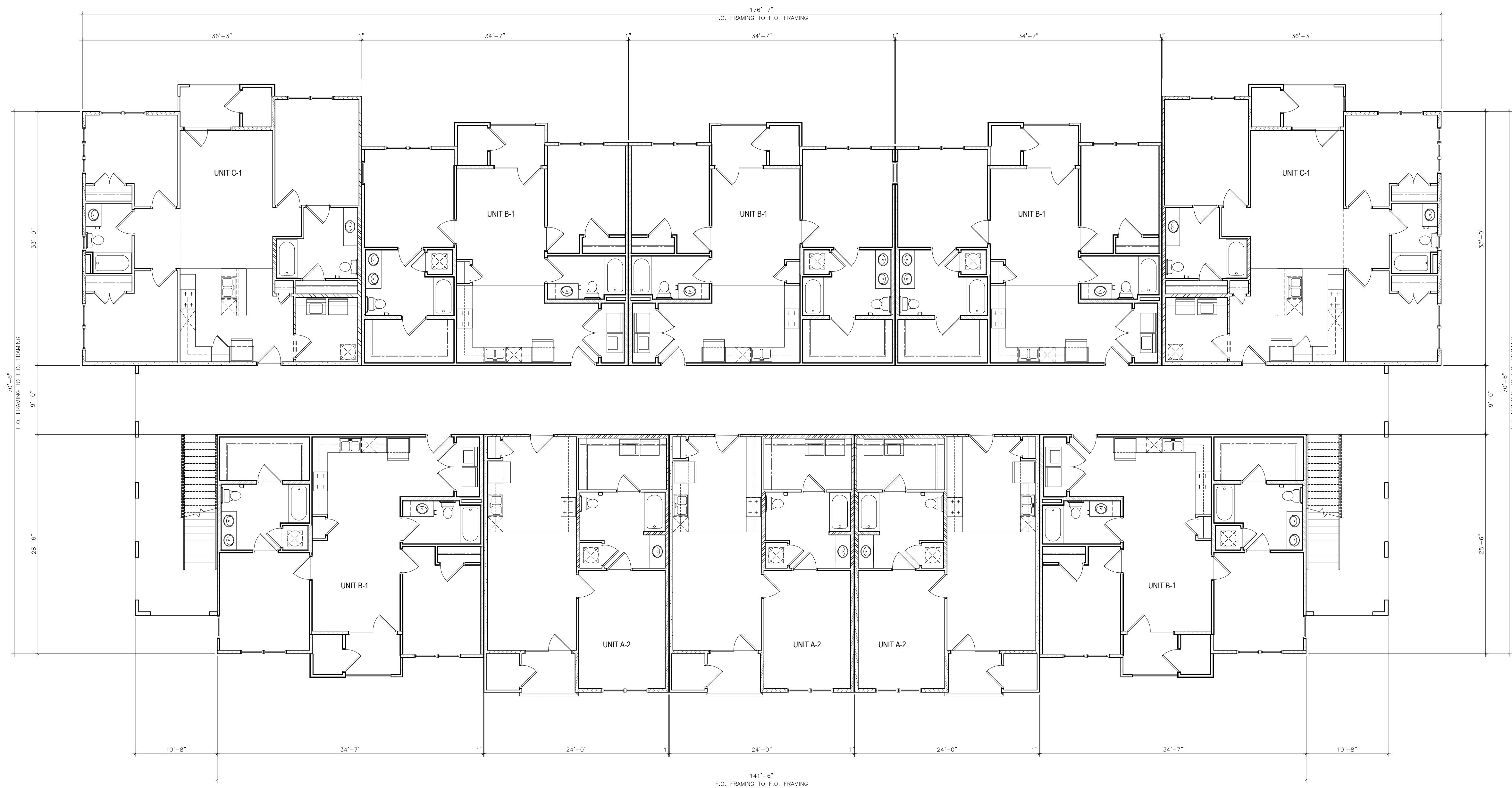
EUREKA APTS.

BUILDING ELEVATIONS
Schematic

- ☐ Approved
- ☐ Revise as noted



A1.7
BUILDING TYPE II ELEVATIONS



01 FLOOR PLAN: Building Type II First Floor Plan
 1/8" = 1'-0"

Gross Building SF: 12,058 Net SF: 9,491
 (1/8" = 1'-0" when 11x17)

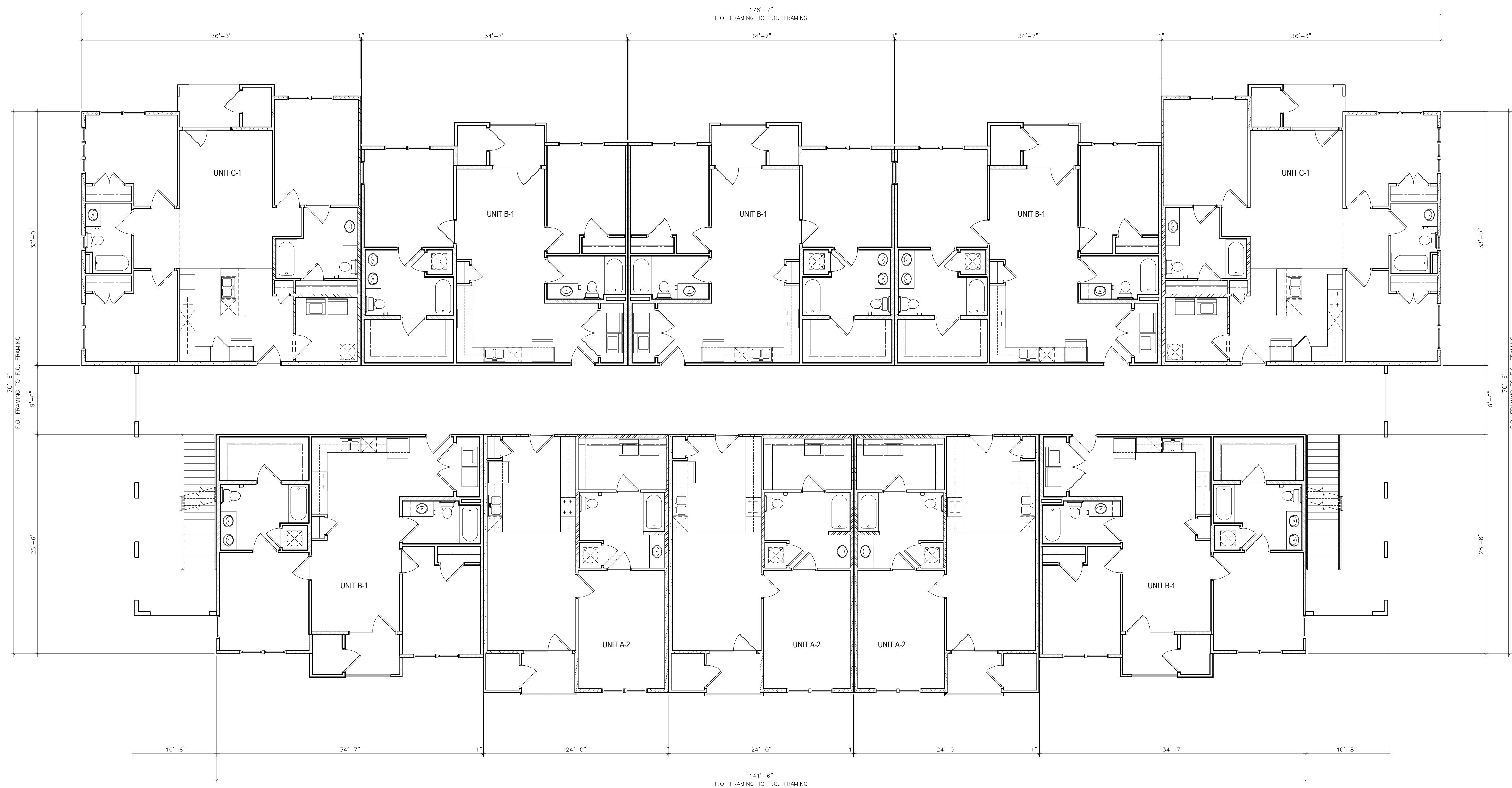
EUREKA APTS.

BUILDING PLANS
 Schematic

- ☐ Approved
- ☐ Revise as noted



A1.8
 BUILDING TYPE II PLAN



01 FLOOR PLAN: Building Type II Second/Third Floor Plan
 1/8" = 1'-0"

Gross Building SF: 11,934 Net SF: 9,491
 (1/8" = 1'-0" when 11x17)

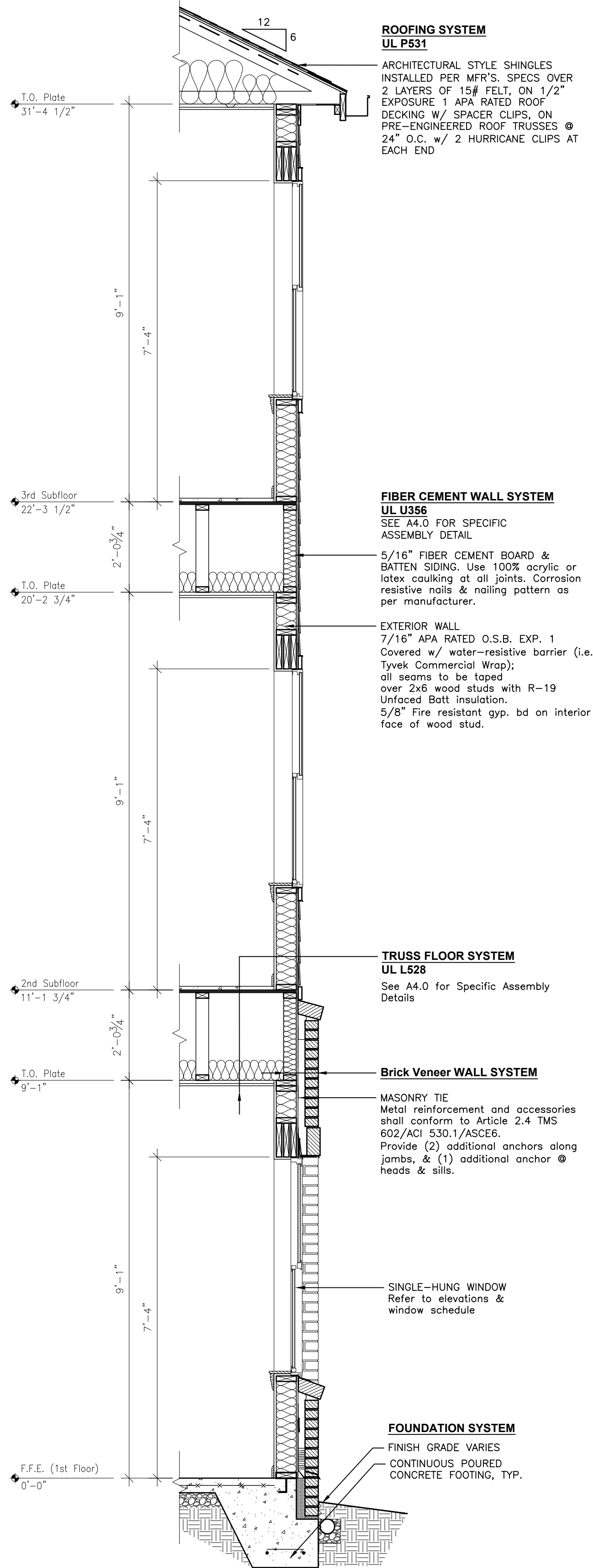
EUREKA APTS.

BUILDING PLANS
 Schematic

- ☐ Approved
- ☐ Revise as noted



A1.9
 BUILDING TYPE II PLAN



02 ELEVATIONS: Building Type II - Right
1/8" = 1'-0" (1/8" = 1'-0" when 11x17)



01 ELEVATIONS: Building Type II - Front
1/8" = 1'-0" (1/8" = 1'-0" when 11x17)

03 WALL SECTION: Typical
1/2" = 1'-0"

EUREKA APTS.

BUILDING ELEVATIONS
Schematic

- ☐ Approved
- ☐ Revise as noted



A1.10
BUILDING TYPE II ELEVATIONS



02 ELEVATIONS: Building Type II - Left
1/8" = 1'-0"



01 ELEVATIONS: Building Type II - Rear
1/8" = 1'-0"

(1/8" = 1'-0" when 11x17)

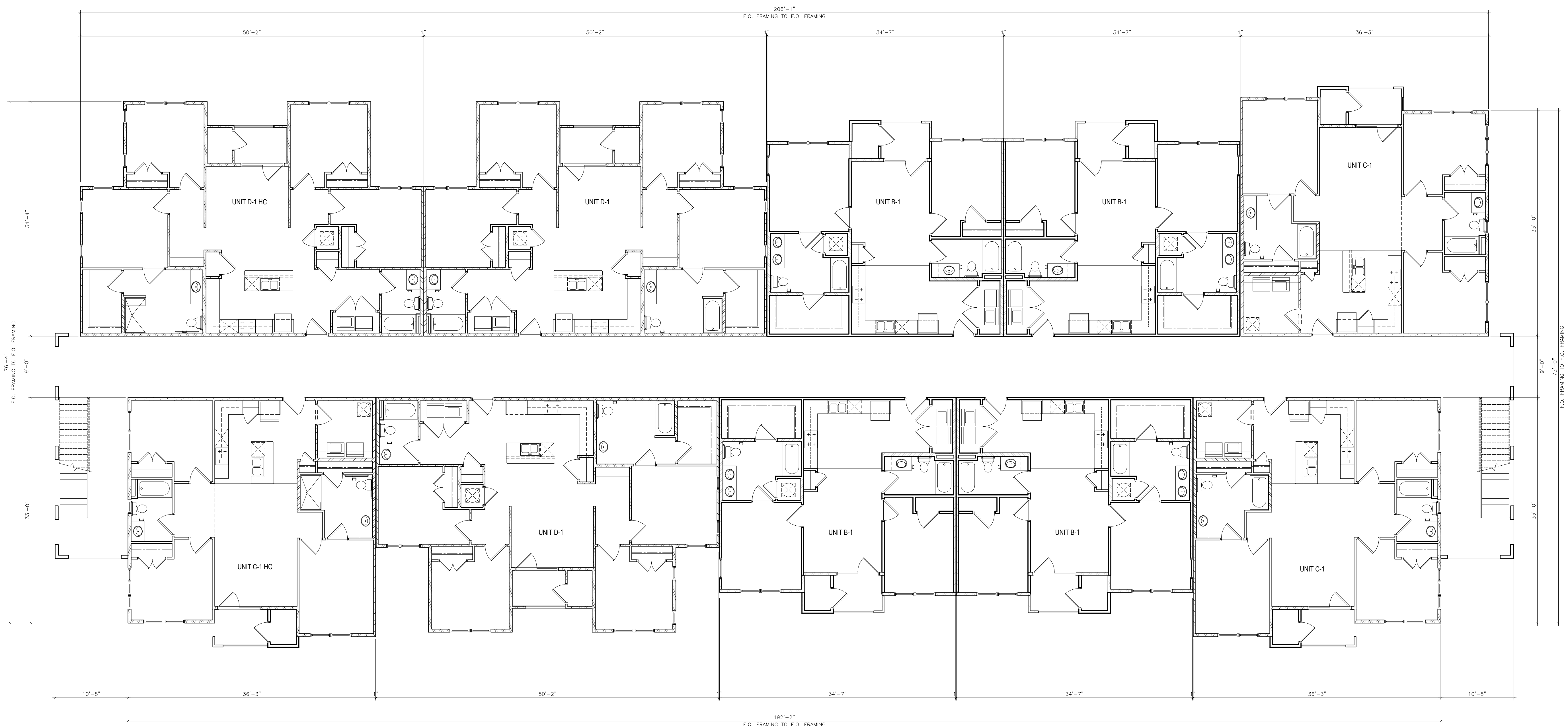
EUREKA APTS.

BUILDING ELEVATIONS
Schematic

- ☐ Approved
- ☐ Revise as noted



A1.11
BUILDING TYPE II ELEVATIONS



01 FLOOR PLAN: Building Type III First Floor Plan
1/8" = 1'-0"

Gross Building SF: 14,525 Net SF: 11,533
(1/8" = 1'-0" when 11x17)

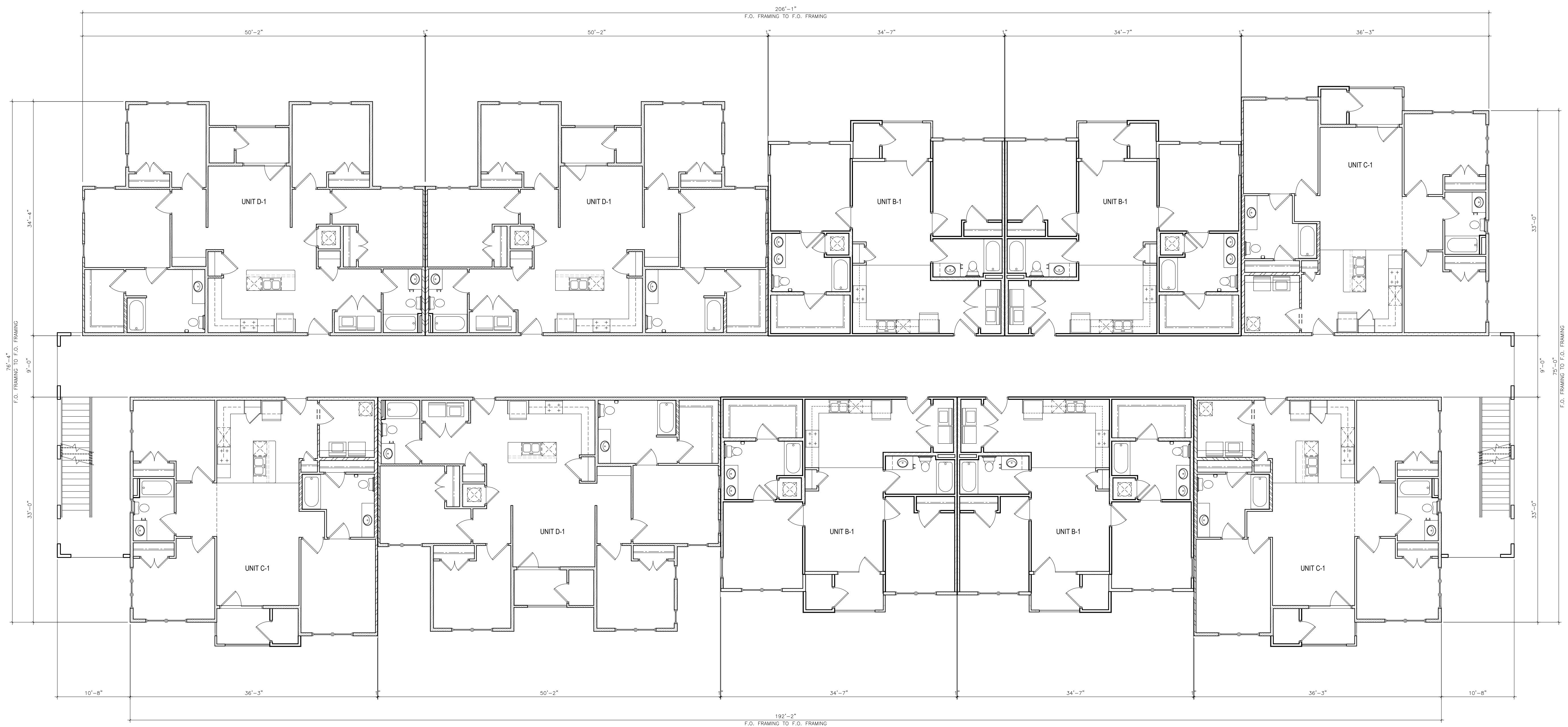
EUREKA APTS.

BUILDING PLANS
Schematic

- ☐ Approved
- ☐ Revise as noted



A1.12
BUILDING TYPE III PLAN



01

FLOOR PLAN: Building Type III Second/Third Floor Plan

1/8" = 1'-0"

Gross Building SF: 14,401 Net SF: 11,533

(1/8" = 1'-0" when 11x17)

EUREKA APTS.

BUILDING PLANS
Schematic

- ☐ Approved
- ☐ Revise as noted



A1.13

BUILDING TYPE III PLAN



02 | ELEVATIONS: Building Type III - Right

1/8" = 1'-0"

(1/8" = 1'-0" when 11x17)



01 | ELEVATIONS: Building Type III - Front

1/8" = 1'-0"

(1/8" = 1'-0" when 11x17)

EUREKA APTS.

BUILDING ELEVATIONS
Schematic

- ☐ Approved
- ☐ Revise as noted



A1.14
BUILDING TYPE III ELEVATIONS



02 | ELEVATIONS: Building Type III - Left
1/8" = 1'-0"



01 | ELEVATIONS: Building Type III - Rear
1/8" = 1'-0"

(1/8" = 1'-0" when 11x17)

EUREKA APTS.

BUILDING ELEVATIONS
Schematic

- ☐ Approved
- ☐ Revise as noted



A1.15
BUILDING TYPE III ELEVATIONS

EUREKA APTS.

CLUBHOUSE PLAN
Schematic

- ☐ Approved
- ☐ Revise as noted

01 FLOOR PLAN: Clubhouse Floor Plan

1/8" = 1'-0"

(1/8" = 1'-0" when 11x17)

MAIL BOX EQUIPMENT & NOTES:

01 MAILBOX UNIT: Auth. Florence 4C16D-20
(31' 9/16" Wide x 56' 1/2" High)
20 front loading A doors

1. PROVIDE 60 MIN. BOXES
All Accessible Mailboxes to be placed within
Reach Zone per 308.3.1, ICC/ANSI A117.1-2003

2. G.C. TO COORDINATE EXACT COUNT & BOX SIZE
WITH OWNER/PROPERTY MANAGER PRIOR TO
PURCHASE & INSTALLATION

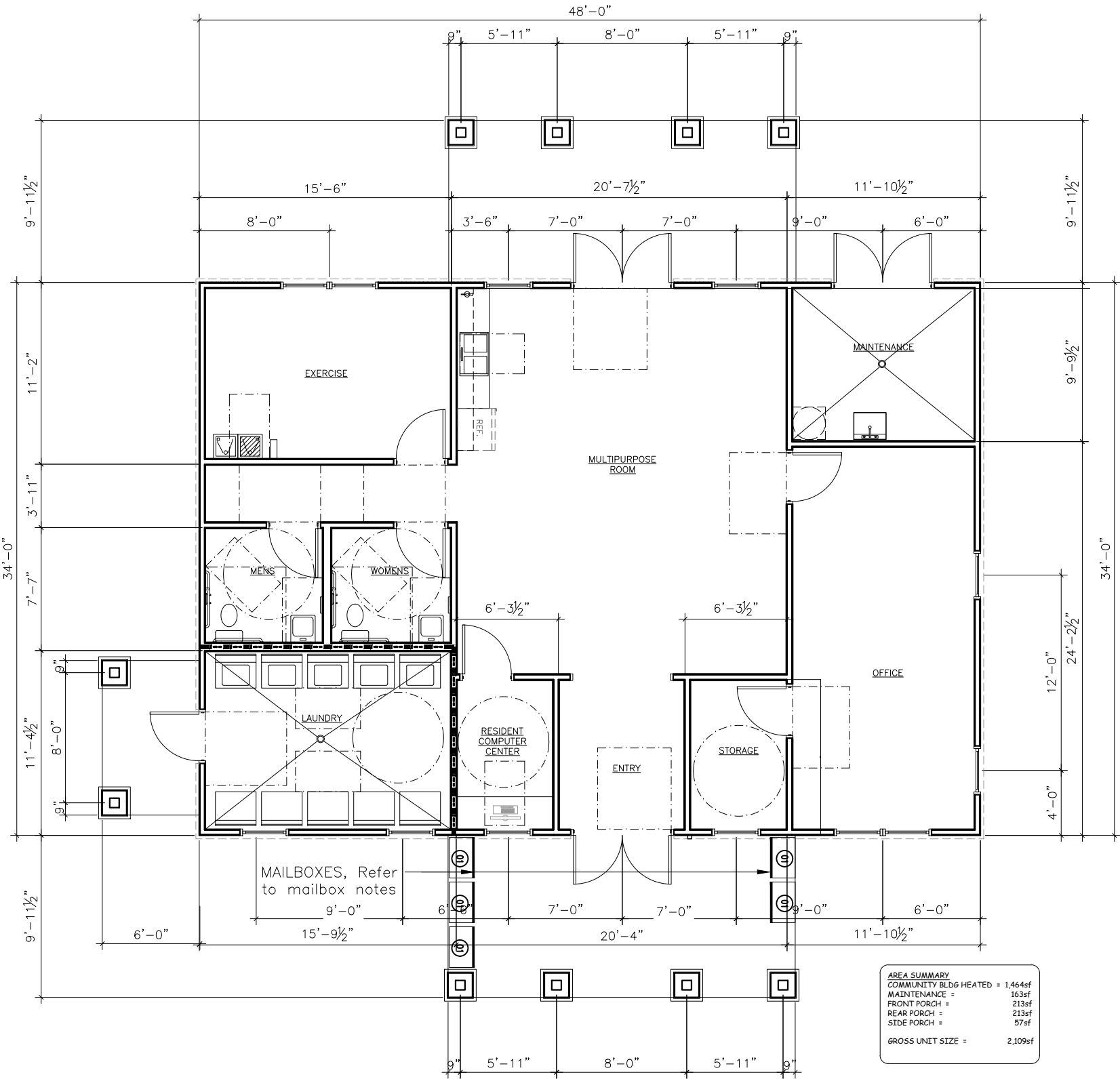
3. MAILBOXES TO BE INSTALLED PER USPS
REGULATIONS.

4. IF NOT LOCATED WITHIN THE BUILDING, THE POSTAL
FACILITY MUST:

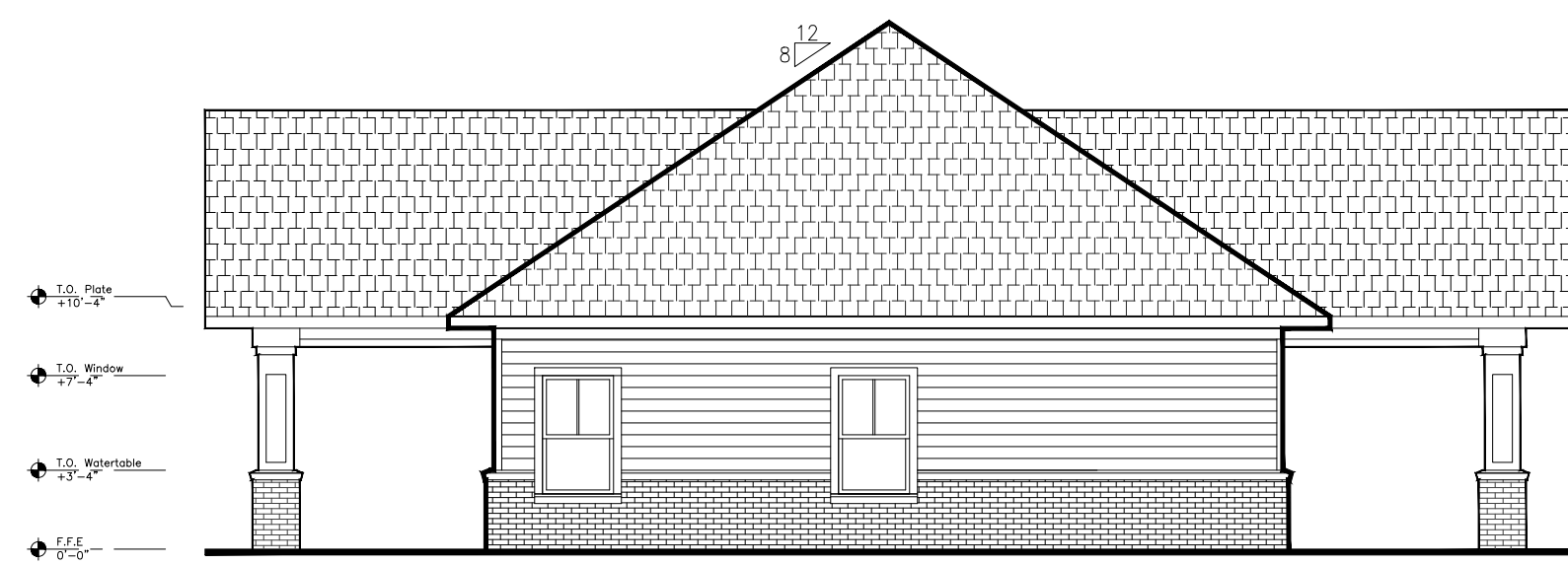
HAVE A ROOF COVERING WHICH OFFERS RESIDENTS
AMPLE WEATHER PROTECTION;

BE LOCATED ADJACENT TO AVAILABLE PARKING AND
SITED FOR SAFE ACCESS WHILE COLLECTING MAIL;
AND

HAVE ADEQUATE LIGHTING FUNCTIONING FROM DUSK
TO DAWN.



A1.16
CLUBHOUSE PLAN



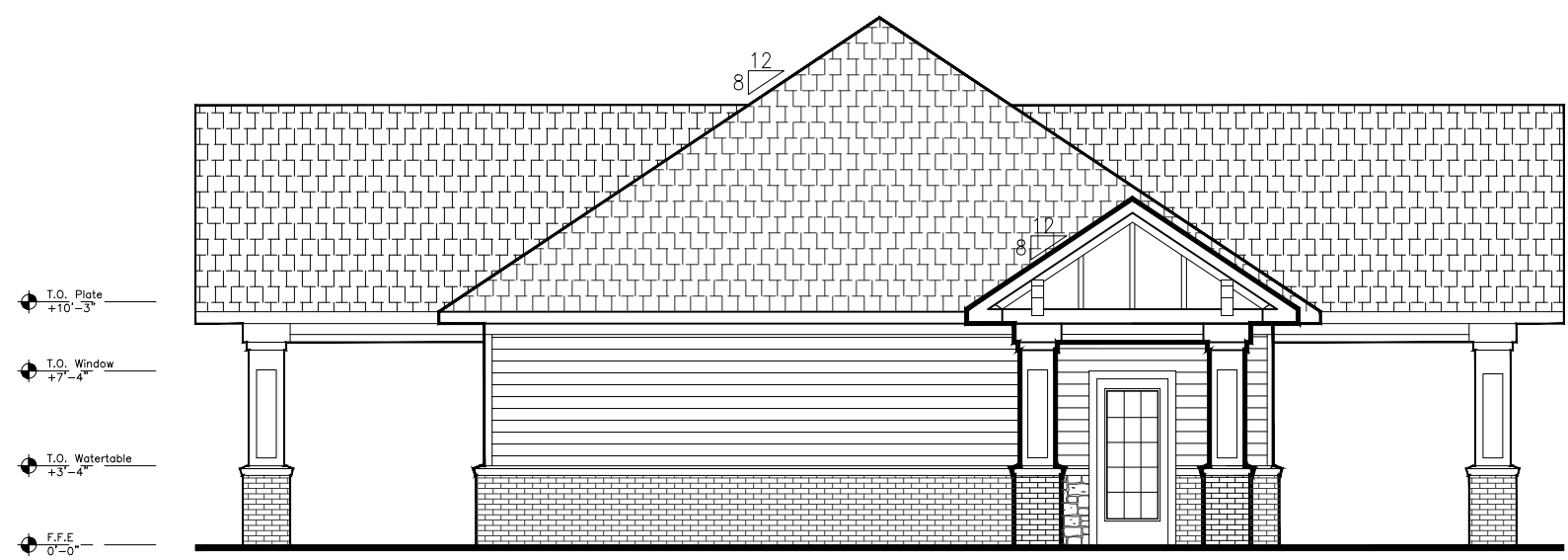
04 | ELEVATIONS: Clubhouse - Right
1/8" = 1'-0"

(1/8" = 1'-0" when 11x17)



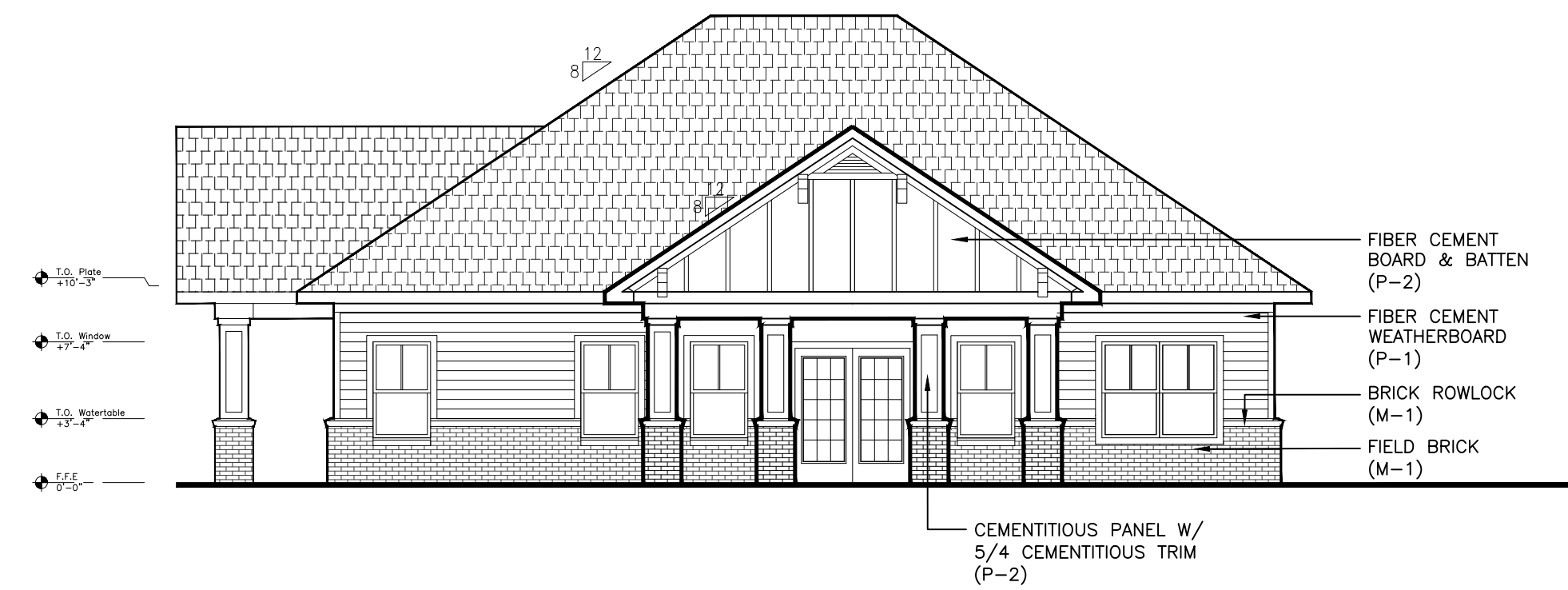
03 | ELEVATIONS: Building Type I - Rear
1/8" = 1'-0"

(1/8" = 1'-0" when 11x17)



02 | ELEVATIONS: Clubhouse - Left
1/8" = 1'-0"

(1/8" = 1'-0" when 11x17)



01 | ELEVATIONS: Clubhouse - Front
1/8" = 1'-0"

(1/8" = 1'-0" when 11x17)

EUREKA APTS.

CLUBHOUSE ELEVATIONS
Schematic

- ☐ Approved
- ☐ Revise as noted



A1.17
CLUBHOUSE ELEVATIONS